

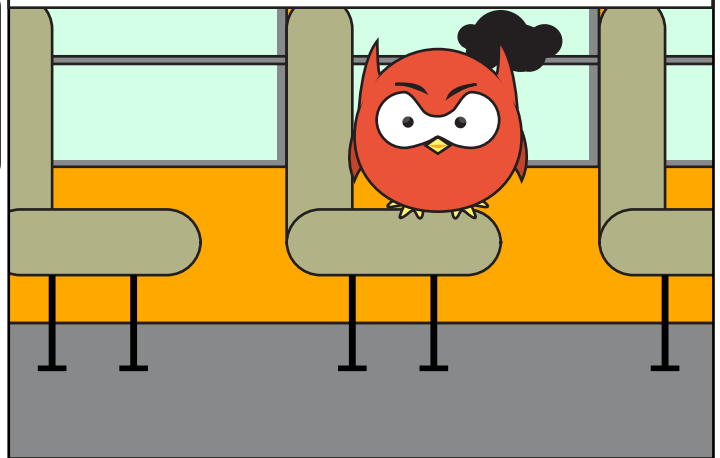
Paf Labaffe en colère

© Communoutils 2013

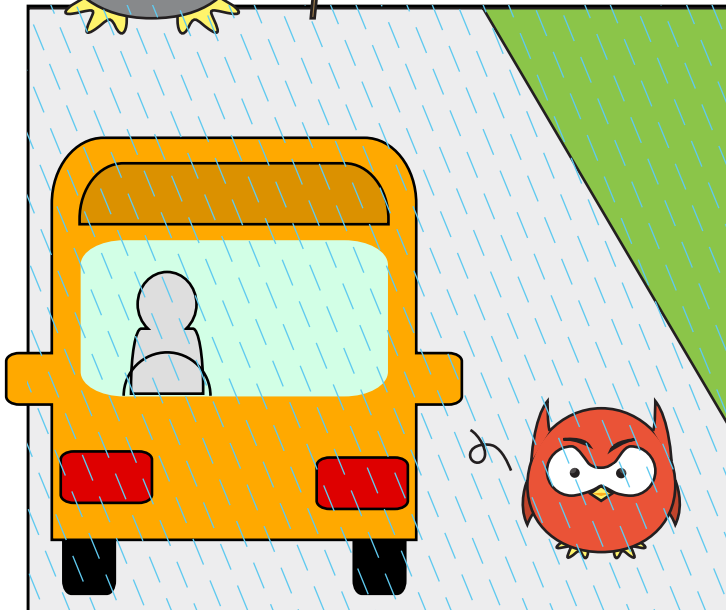


Paf Labaffe est un camarade de classe de Kiko. Il est souvent fâché, ce qui ne l'aide pas toujours.

Ce matin, Paf se sentait en colère contre tout.



Il était en colère en sortant de l'autobus.



Je déteste la pluie..



ARRÊTE DE
TOMBER, PLUIE!

Ouille!

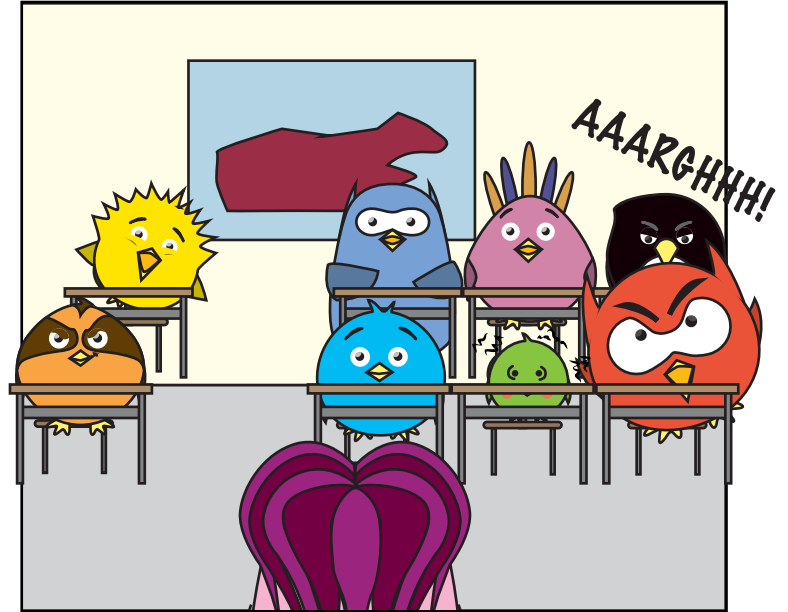
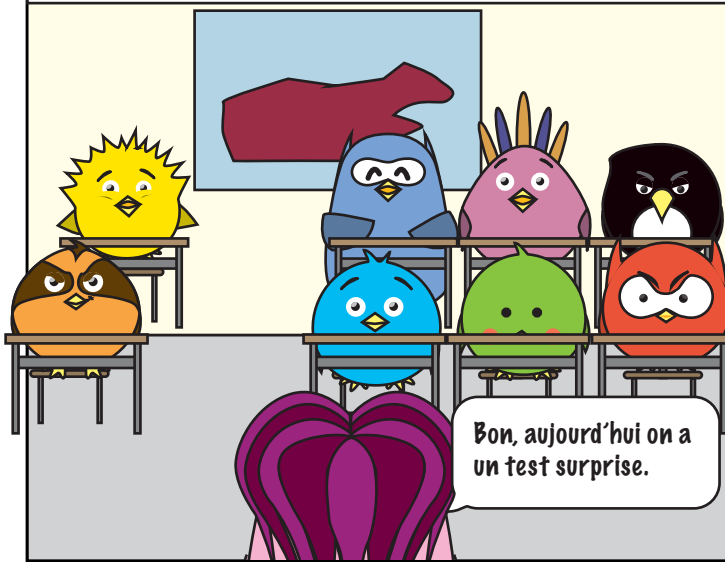


Bas les
pattes, Paf.

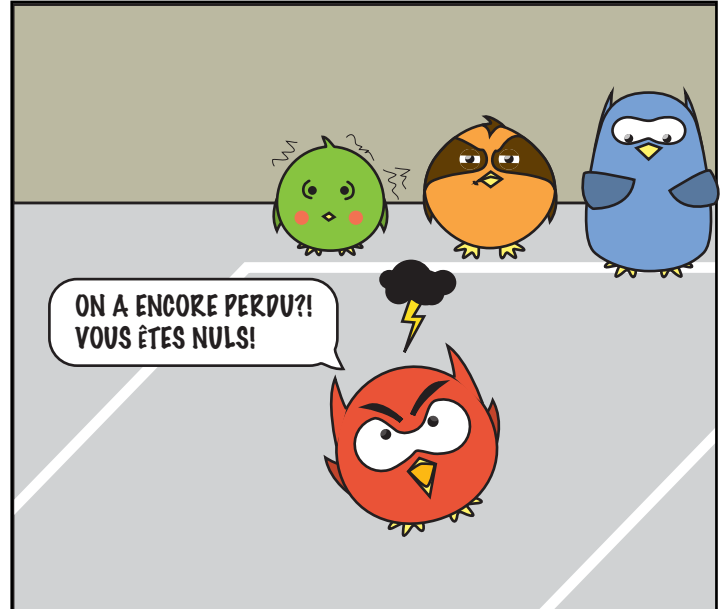
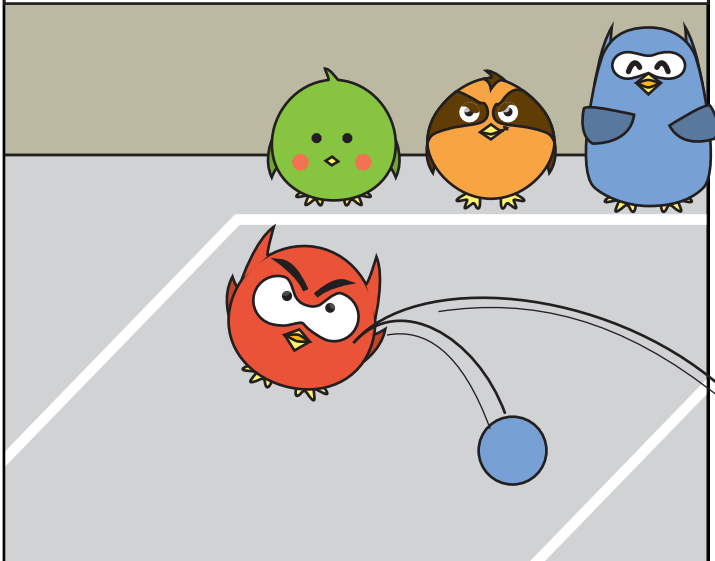
Reste en dehors de
ça, c'est entre moi
et la pluie.



Il était en colère en classe.

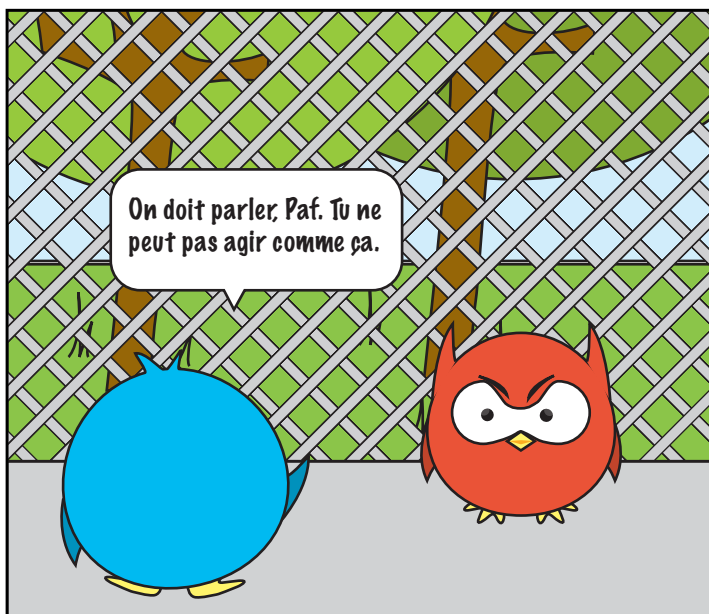
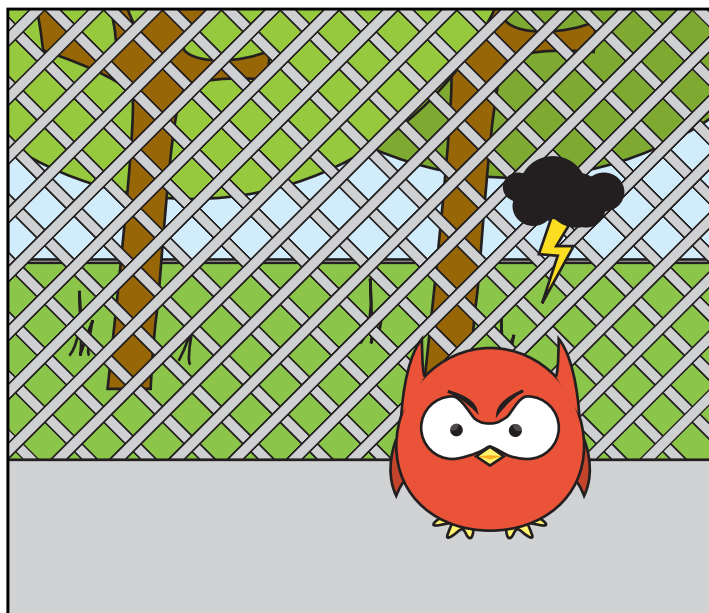
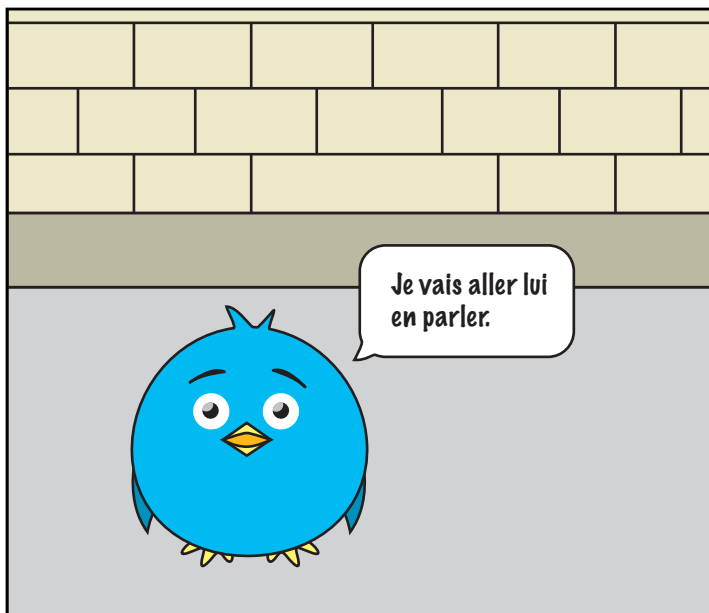
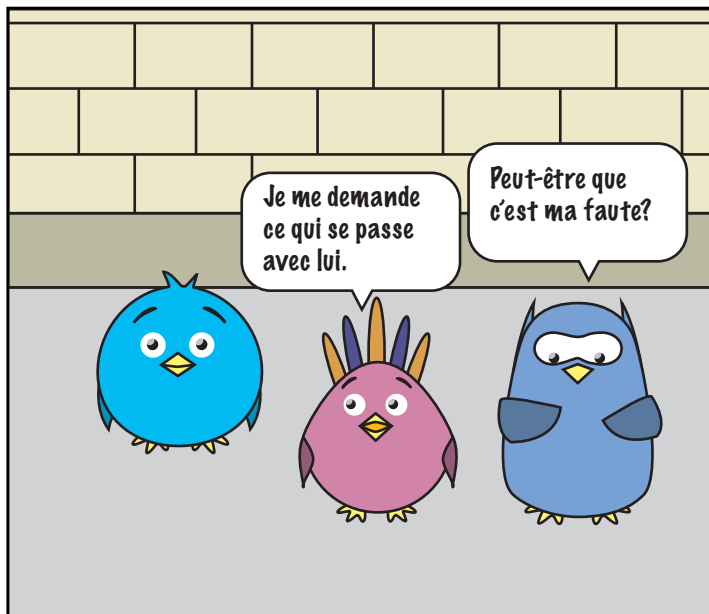
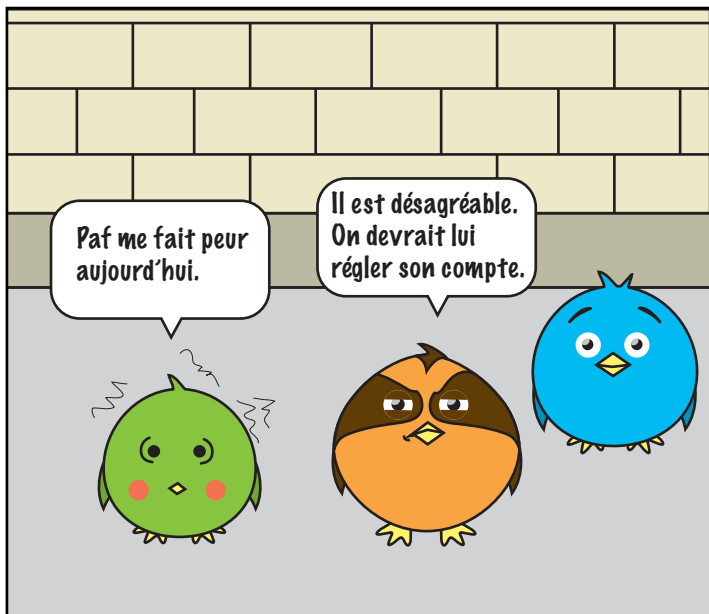


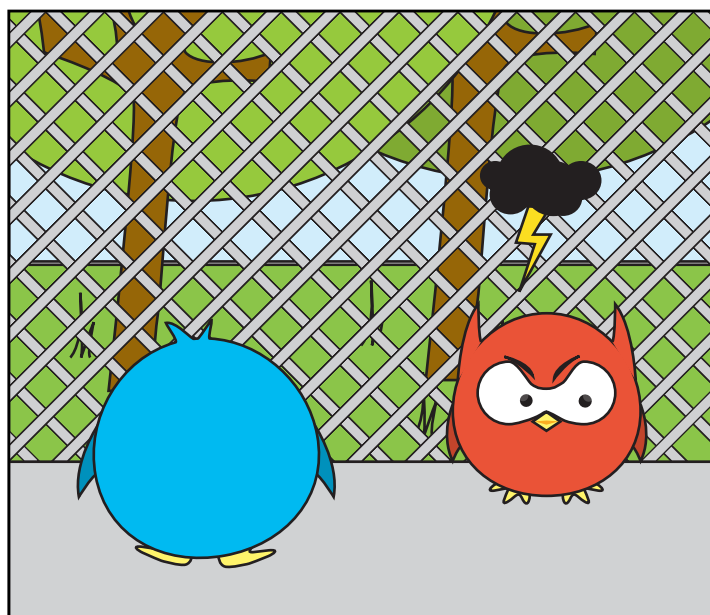
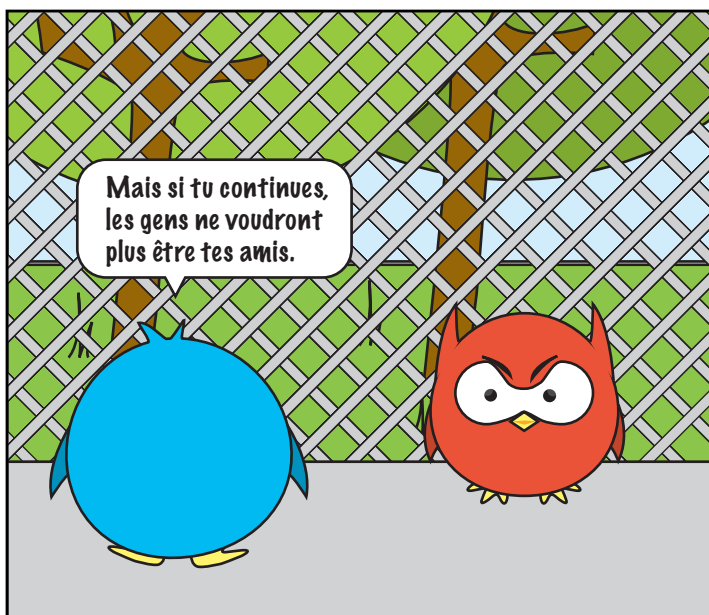
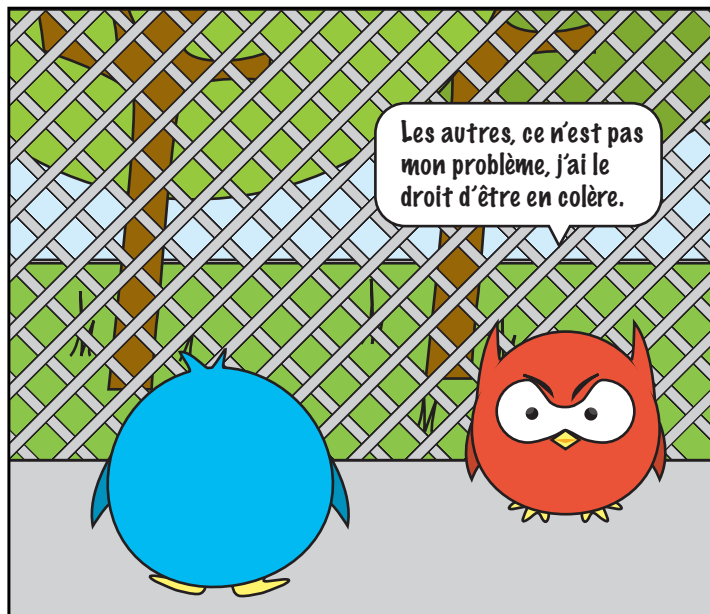
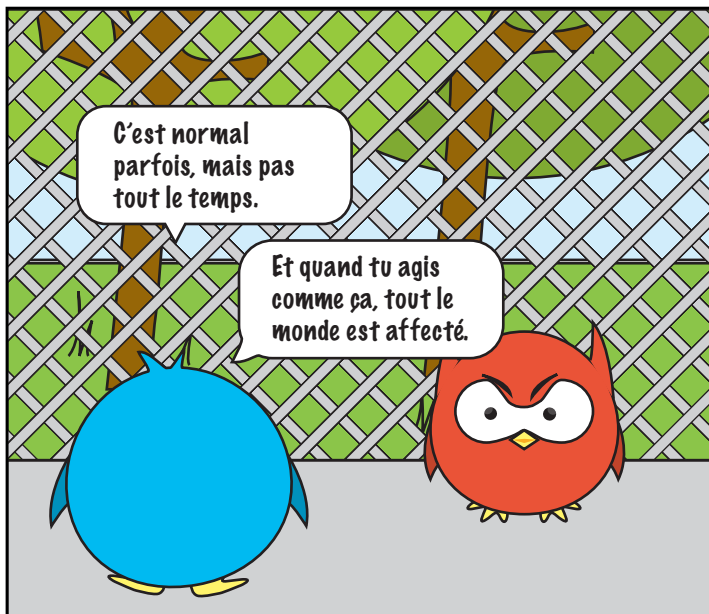
Il était en colère à la récréation.



Paf n'arrive pas à contenir sa colère et ses camarades réagissent tous de façon différente.

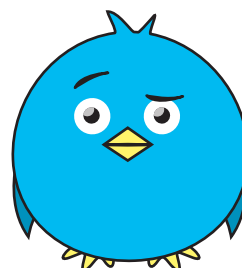


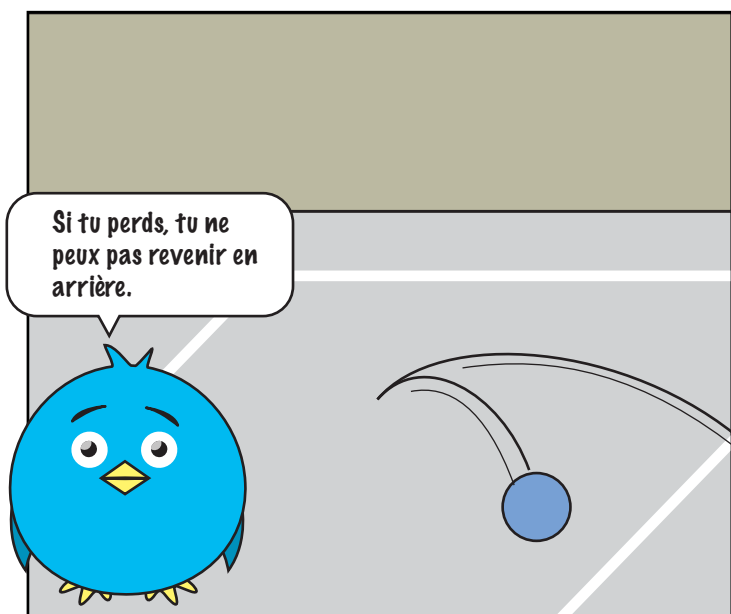
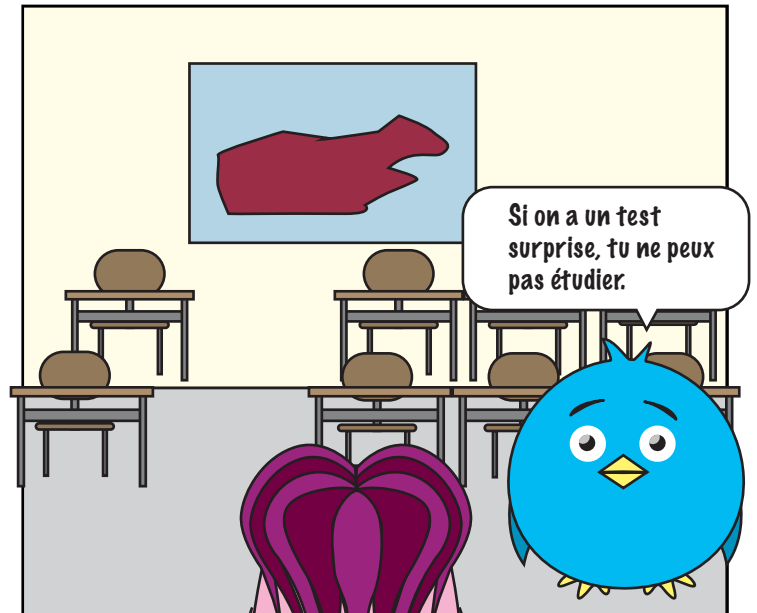
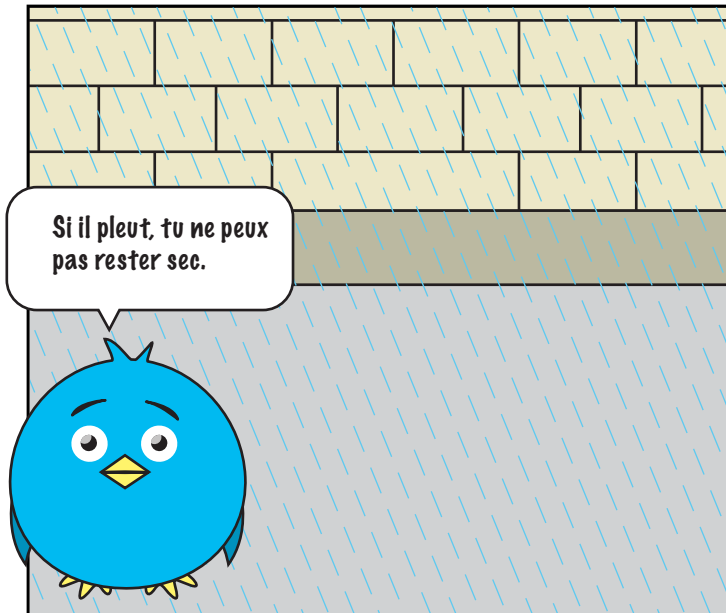
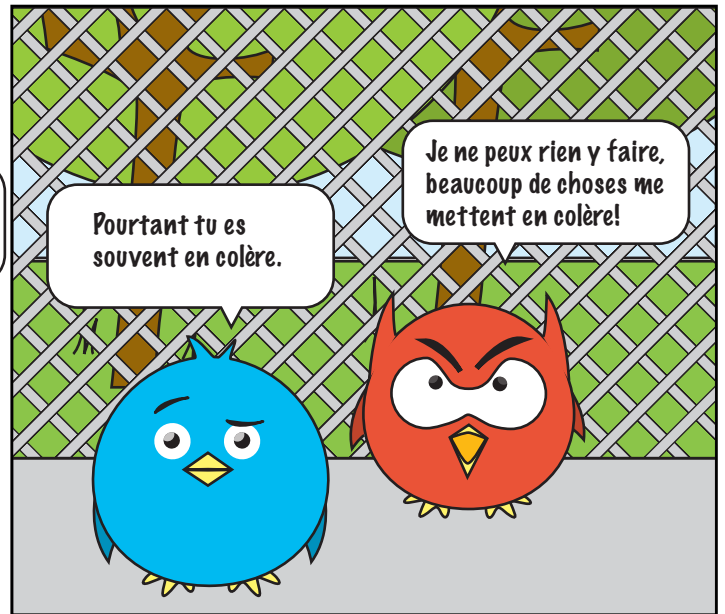
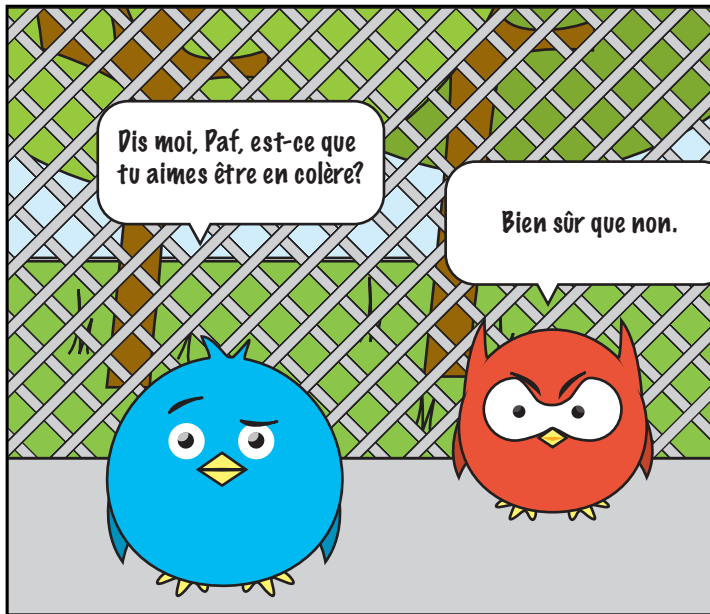


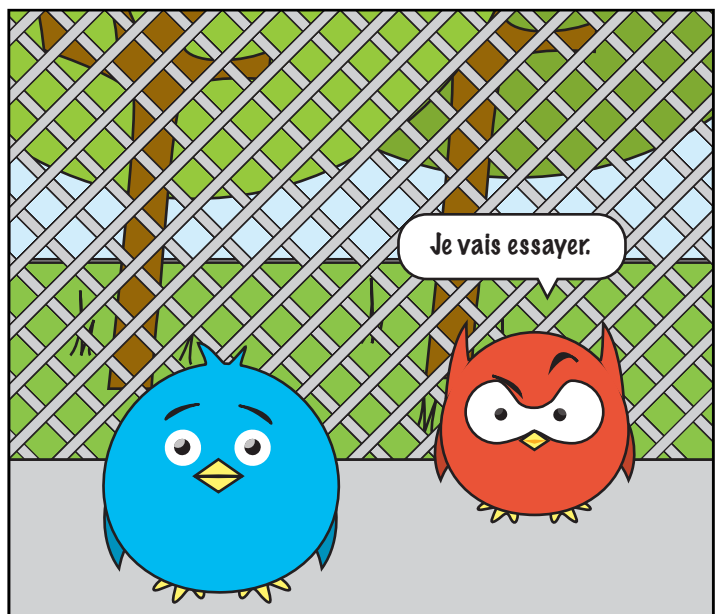
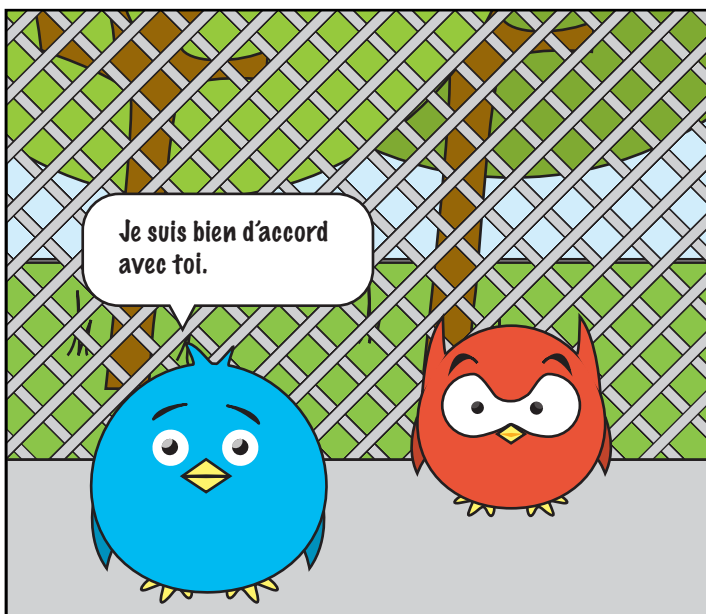
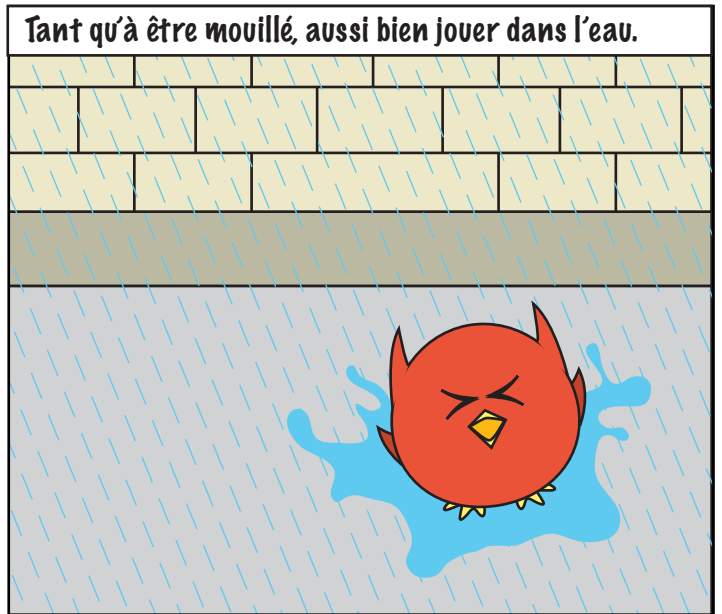
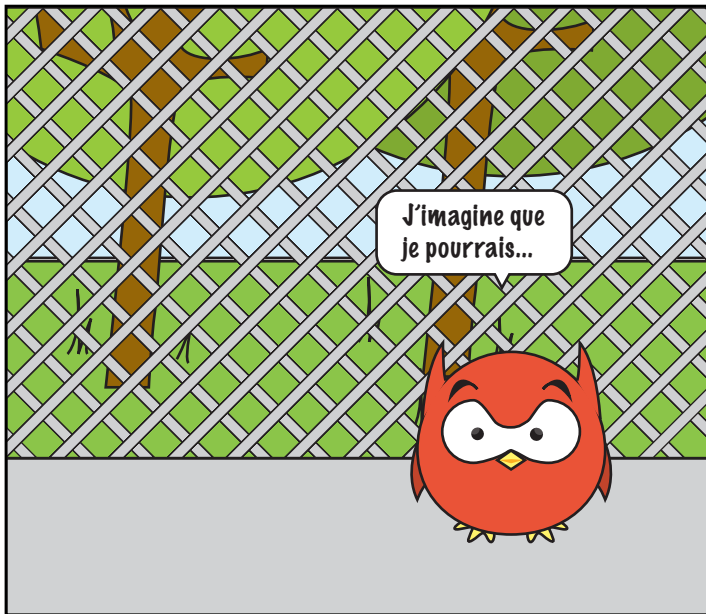


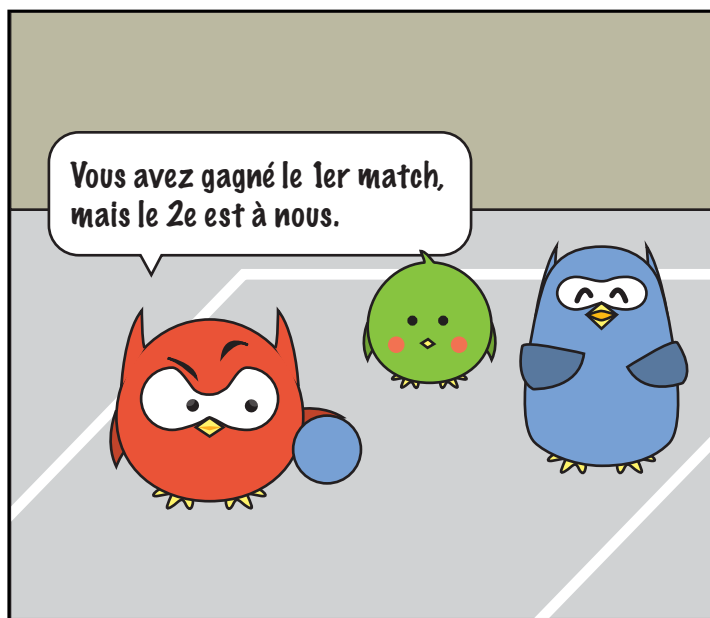
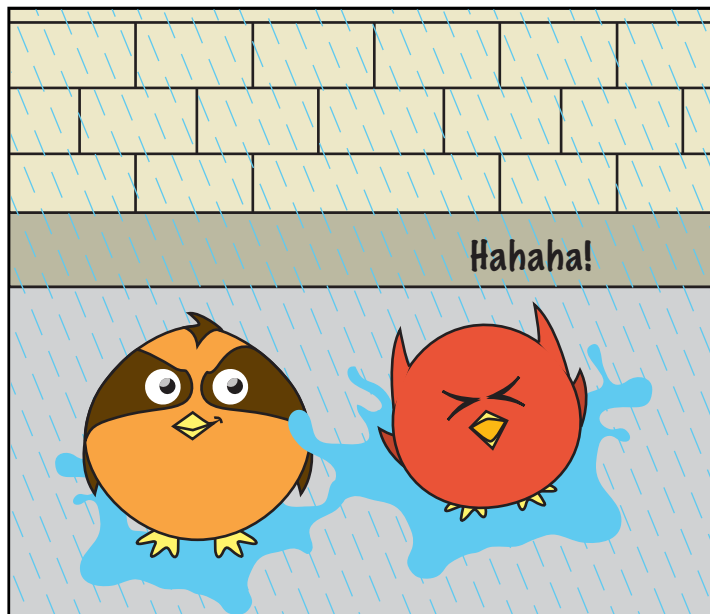
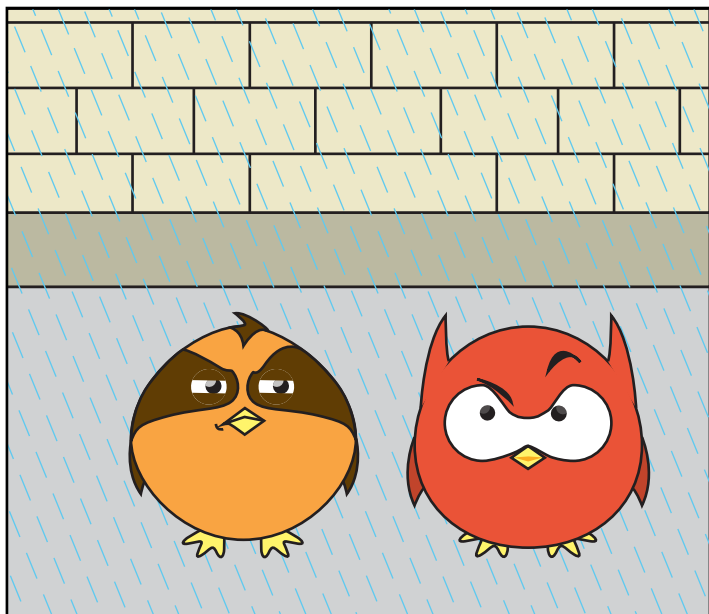
Paf ne veut pas écouter Kiko, comment va-t-il lui faire comprendre?

HHHHHHHHH...









Paf a dû faire des efforts, mais après peu de temps, il contrôlait déjà beaucoup mieux sa colère. Aussi, ses relations avec ses amis sont maintenant beaucoup plus faciles.